

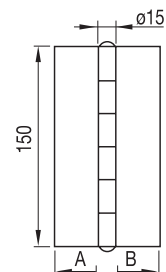




**Bisagra 2 alas.**

Charnière 2 ailes.

Dobradiça 2 abas.

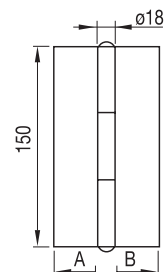


Acabado	A	B	Espesor/épaisseur/espessura	Código	
Acero/acier/aço	50	50	3	<b>84-101/10</b>	12
Zincado/zingée/zincado	50	50	3	<b>84-101/12</b>	12
Acero/acier/aço	60	60	3	<b>84-101/18</b>	12
Zincado/zingée/zincado	60	18	3	<b>84-101/20</b>	12
Acero/acier/aço	70	22	3	<b>84-101/26</b>	10
Zincado/zingée/zincado	70	22	3	<b>84-101/28</b>	10
Acero/acier/aço	75	75	3	<b>84-101/34</b>	10
Zincado/zingée/zincado	75	75	3	<b>84-101/36</b>	10

**Bisagra reforzada 2 alas.**

Charnière renforcée 2 ailes.

Dobradiça reforçada 2 abas.

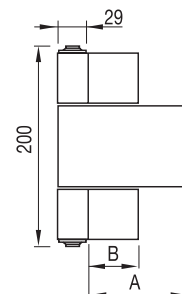


Acabado	A	B	Espesor/épaisseur/espessura	Código	
Acero/acier/aço	50	50	3,5	<b>84-102/10</b>	12
Zincado/zingée/zincado	50	50	3,5	<b>84-102/12</b>	12
Acero/acier/aço	60	60	3,5	<b>84-102/18</b>	12
Zincado/zingée/zincado	60	60	3,5	<b>84-102/20</b>	12
Acero/acier/aço	70	70	3,5	<b>84-102/26</b>	10
Zincado/zingée/zincado	70	70	3,5	<b>84-102/28</b>	10
Acero/acier/aço	90	60	3,5	<b>84-102/34</b>	10
Zincado/zingée/zincado	90	60	3,5	<b>84-102/36</b>	10

**Bisagra reforzada 3 alas.**

Charnière renforcée 3 ailes.

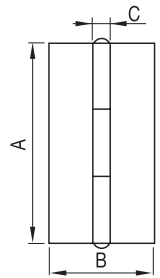
Dobradiça reforçada 3 abas.



Acabado	A	B	Espesor/épaisseur/espessura	Código	
Acero/acier/aço	115	70	6	<b>84-103/10</b>	8
Zincado/zingée/zincado	115	70	6	<b>84-103/12</b>	8

### Bisagra de librillo. Acero

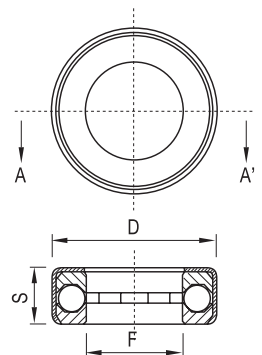
Charnière livre 2 ailes. Acier  
Dobradiça livre 2 corpos. Aço



A	B	øC	Código	
80	51	16,0	<b>84-115/08</b>	45
100	57	18,0	<b>84-115/10</b>	25
150	57	18,5	<b>84-115/15</b>	25

### Cojinetes para pernios. Zincados

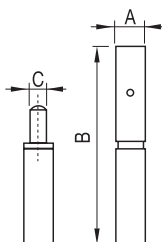
Roulement pour paumelles. Zingué  
Rolamentos para pernos. Zincados



øF	øD	S	Código	
10	17,5	6,0	<b>86-032</b>	100
12	20,0	6,5	<b>86-036</b>	100
14	22,0	6,7	<b>86-038</b>	100
20	29,0	6,5	<b>86-040</b>	50

### Pernio de 2 cuerpos. Acero

Paumelles deux corps. Acier  
Perno 2 corpos. Aço

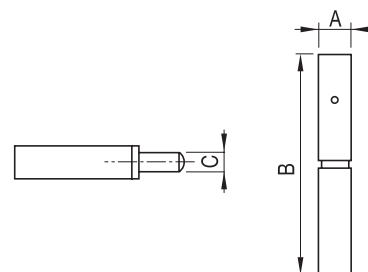



øA	B	øC	Código	
8	50	5	<b>86-050</b>	36
10	60	6	<b>86-054</b>	36
10	70	6	<b>86-058</b>	36
12	60	8	<b>86-062</b>	24
12	70	8	<b>86-066</b>	35
14	80	8	<b>86-070</b>	24
16	90	10	<b>86-100</b>	20
16	100	10	<b>86-104</b>	20
18	110	12	<b>86-108</b>	20
20	120	12	<b>86-112</b>	16
22	130	14	<b>86-114</b>	20
25	140	16	<b>86-116</b>	12
30	150	18	<b>86-120</b>	12

**Pernio de 2 cuerpos. INOX**

Paumelles deux corps. INOX

Perno 2 corpos. INOX

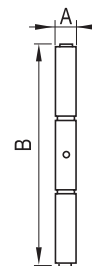
**Inox**


∅A	B	∅C	Código	
8	50	5	<b>86-122/1</b>	36
10	70	6	<b>86-122/2</b>	36
12	70	8	<b>86-122/3</b>	35
14	80	8	<b>86-122/4</b>	24
16	100	10	<b>86-122/5</b>	20
20	120	12	<b>86-122/6</b>	16
25	140	16	<b>86-122/7</b>	12

**Pernio de 3 cuerpos. Acero**

Paumelles trois corps. Acier

Perno 3 corpos. Aço

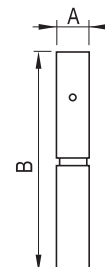



∅A	B	Código	
16	100	<b>86-124</b>	25
18	110	<b>86-128</b>	20
20	120	<b>86-132</b>	20
25	150	<b>86-136</b>	8

**Pernio con rodamiento axial. Zincado**

Paumelles avec roulement axial. Zinguées

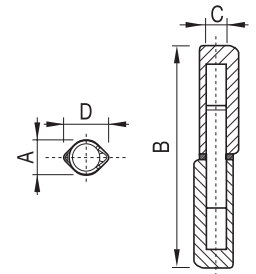
Perno com rolamento axial. Zincado




∅A	B	Código	
20	120	<b>86-138/20</b>	15
25	130	<b>86-138/25</b>	12
30	140	<b>86-138/30</b>	10
35	150	<b>86-138/35</b>	8

**Pernio perfil gota. Eje y arandela de latón**

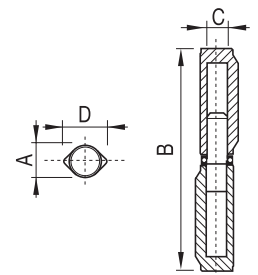
Paumelles profil goutte. Pivot et rondelle en laiton  
 Perno perfil gota. Eixo de latão




øA	B	øC	D	Código	
10	60	6	12	<b>86-140</b>	24
12	80	7	14	<b>86-144</b>	10
14	100	8	16	<b>86-148</b>	10
16	120	9	18	<b>86-152</b>	10
16	140	9	18	<b>86-156</b>	10
18	140	10	21	<b>86-157</b>	20
20	140	12	24	<b>86-158</b>	18
22	150	14	26	<b>86-159</b>	16

**Pernio perfil gota con rodamiento. Eje y arandela de latón**

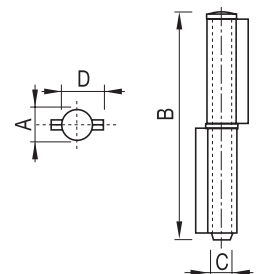
Paumelles profil goutte avec roulement. Pivot et rondelle en laiton  
 Perno perfil gota com rolamento. Eixo de latão




øA	B	øC	D	Código	
20	140	11	25	<b>86-171</b>	10
20	160	11	25	<b>86-171/4</b>	10
20	180	11	25	<b>86-171/8</b>	10

**Pernio 2 alas. Acero**

Paumelles deux ailes. Acier  
 Perno 2 abas. Aço

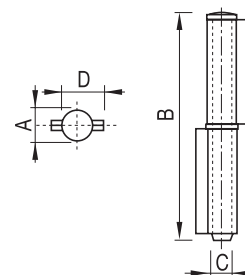



øA	B	øC	D	Código	
12,0	80	8	16	<b>86-180</b>	20
14,5	100	9	18	<b>86-184</b>	20
14,5	120	10	19,5	<b>86-188</b>	30
16,5	140	11	21	<b>86-192</b>	10
18,0	170	12	24	<b>86-196</b>	5
20,0	200	14	27	<b>86-198</b>	5

**Pernio 2 alas. INOX**

Paumelles deux ailes. INOX

Perno 2 abas. INOX

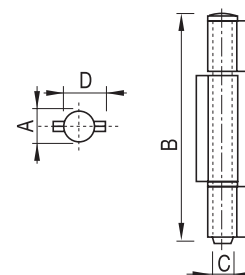
**Inox**


øA	B	øC	D	Código	
12,0	80	8	16,0	<b>86-199/02</b>	24
13,0	100	9	18,0	<b>86-199/04</b>	24
14,5	120	10	19,5	<b>86-199/06</b>	24
16,0	140	11	21,0	<b>86-199/08</b>	24

**Pernio 3 alas. Acero**

Paumelles trois ailes. Acier

Perno 3 abas. Aço

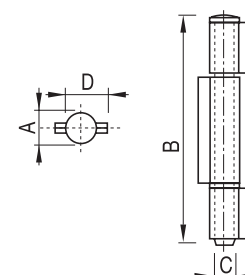



øA	B	øC	D	Código	
12,0	80	8	16,0	<b>86-200</b>	24
13,0	100	9	18,0	<b>86-204</b>	24
14,5	120	10	19,5	<b>86-208</b>	24
16,0	140	11	21,0	<b>86-212</b>	24
17,5	170	12	24,0	<b>86-216</b>	12
20,0	200	14	27,0	<b>86-220</b>	12

**Pernio 3 alas. INOX**

Paumelles trois ailes. INOX

Perno 3 abas. INOX

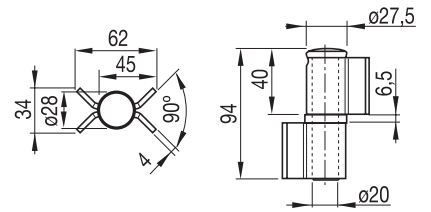
**Inox**

øA	B	øC	D	Código	
12,0	80	8	16,0	<b>86-221/03</b>	24
13,0	100	9	18,0	<b>86-221/05</b>	24
14,5	120	10	19,5	<b>86-221/07</b>	24
16,0	140	11	21,0	<b>86-221/09</b>	24

**Pernio reforzado 2 alas. Acero**

Paumelle renforcée deux ailes. Acier

Perno reforçado 2 abas. Aço

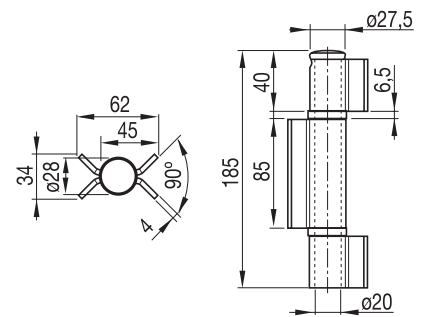


Modelo	Código	
Arandela latón/rondelle laiton/aruela de latão	<b>86-221/2</b>	8
Cojinete/roulement/rolamento	<b>86-221/4</b>	8

**Pernio reforzado 3 alas. Acero**

Paumelle renforcée trois ailes. Acier

Perno reforçado 3 abas. Aço

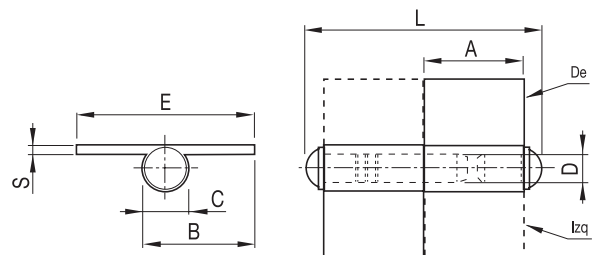


Modelo	Código	
Arandela latón/rondelle laiton/aruela de latão	<b>86-221/6</b>	4
Cojinete/roulement/rolamento	<b>86-221/8</b>	4

**Pernio ala media. Acero**

Paumelles aile moyenne. Acier

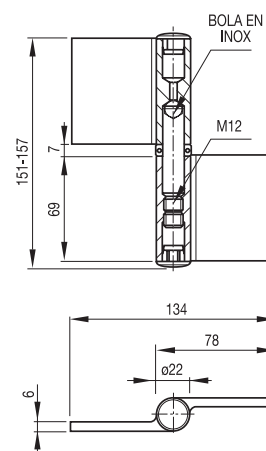
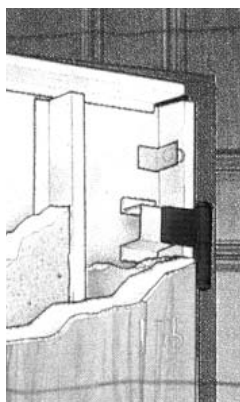
Perno aba média. Aço



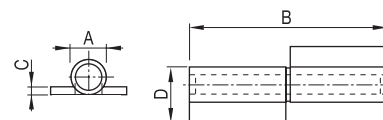
	A	B	øC	øD	E	L	S	Código	
D	30	35	14,0	8	56	72	2,7	<b>86-222/04</b>	20
I	30	35	14,0	8	56	72	2,7	<b>86-222/05</b>	20
D	39	35	14,0	8	56	90	2,7	<b>86-222/06</b>	20
I	39	35	14,0	8	56	90	2,7	<b>86-222/07</b>	20
D	50	48	16,5	10	80	113	3,0	<b>86-222/08</b>	20
I	50	48	16,5	10	80	113	3,0	<b>86-222/09</b>	20
D	60	48	16,5	10	80	133	3,0	<b>86-222/10</b>	20
I	60	48	16,5	10	80	133	3,0	<b>86-222/11</b>	20
D	70	55	19,5	12	90	155	3,5	<b>86-222/12</b>	20
I	70	55	19,5	12	90	155	3,5	<b>86-222/13</b>	20
D	80	55	19,5	12	90	175	3,5	<b>86-222/14</b>	20
I	80	55	19,5	12	90	175	3,5	<b>86-222/15</b>	20

D: Derecha/droite/dereita I: Izquierda/gauche/esquerda



**Pernio regulable. Acero**Paumelle réglable. Acier  
Perno regulável. Aço

Modelo	Código	
Pernio regulable	<b>86-222/2</b>	6

**Pernio pala. Acero**Charnière à pelle. Acier  
Perno com aba. Aço

øA	B	C	D	Código	
<b>Ala corta/aile courte/asa curta</b>					
12	80	2,0	15	<b>86-222/6</b>	10
14	80	3,0	20	<b>86-222/8</b>	10
<b>Ala media/aile moyenne/mid asa</b>					
12	60	2,5	30	<b>86-222/9</b>	10
12	80	2,5	30	<b>86-223/0</b>	10
14	80	3,0	30	<b>86-223/2</b>	10
16	100	3,0	30	<b>86-223/4</b>	10
18	110	3,5	30	<b>86-223/6</b>	10
20	120	4,0	30	<b>86-223/8</b>	10
25	140	5,0	37	<b>86-223/84*</b>	10
30	150	6,0	40	<b>86-223/86*</b>	10

\* Zincados/zingée/zincado

**Aplicación**

Application

Aplicação

